

## S85 Specification

TV SYSTEM	NTSC	PAL	
IMAGE SENSOR	1/3-INCH I.L CCD IMAGE SENSOR		
CCD TOTAL PIXELS	~ 410K	~ 470K	
SYNC SYSTEM	INTERNAL / LINE LOCK (3.3V VD PULSE INPUT)		
MINIMUM ILLUMINATION	0.012 LUX@F1.2 /20 IRE AGC ON B/W 0.0014 LUX@F1.2 /20 IRE SENS-UP (32X) B/W		
LENS & VIEW ANGLE	3.6mm F2.0 / 92°		
RESOLUTION	540 TVL		
WHITE BALANCE	Mode	ATW / AWC	
	Range	3200 ~ 10000 °K	
S / N RATIO	50DB (MIN) / 58DB (TYP) (GAMMA, APERTURE, AGC OFF)		
AUDIO OUTPUT	BUILD IN 60 DB GAIN AUDIO AMPLIFIER WITH LOW IMPEDANCE OUTPUT		
SENSE UP	ON /OFF (PRESET 4X, MAX 256XBY PROGRAM SET)		
GAIN CONTROL	AGC ON / OFF		
GAMMA CONTROL	0.45 / 1.0		
FRAME INTEGRRATION	OFF / ON (PRESET 4X, MAX 32X BY PROGRAM SET)		
H - MIRROR FUNCTION	OFF (NORMAL IMAGE) / ON (HORIZONTAL IMAGE INVERSION)		
V - MIRROR FUNCTION	OFF (NORMAL IMAGE) / ON (VERTICAL IMAGE INVERSION)		
B.L.C. FUNCTION	OFF / ON		
Zoom function	OFF / ON		
Day / night sw	OFF / ON		
AUTO IRIS	A.E.S. / DC-IRIS		
ENHANCE	HIGH/MID		
FLICKLESS	OFF/ON		
COLOR BAR	OFF/ON		
IR-CUT-FILTER SW	ON /OFF		
ELECTRONIC SHUTTER	A.E.S	1/60~1/120,000 SEC.   1/50~1/120,000 SEC.	
	FIX	1/50(60),1/100,1/250,1/500,1/1000,1/2000,1/4000,1/10000	
SDNR	BUILT-IN SDNR (SUPER DIGITAL NOISE REDUCTION)		
VIDEO OUTPUT	ANALOGY	1.0V P-P COMPOSITE VIDEO AT 75 ohm	
	DIGITAL	ITU 601	
OPERATION TEMPERATURE	-20°C TO 50°C		
OPERATIONAL HUMIDITY	WITHIN 85% RH		
POWER SUPPLY	DC12V±1V / 150MA		

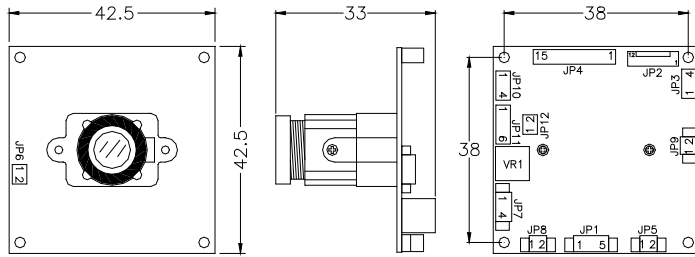
1. Avoid places where there is direct sunlight. When using the camera outside.
2. Be careful, never let any water in this equipment.
3. Do not directly touch the Sensor device. If necessary, use a soft cloth moistened with alcohol to wipe off the dust.
4. When the camera installs in dust or wet environment, please puts into the camera housing.
5. Be extra careful not to shake the camera.
6. Avoid places where temperatures exceed 50 °C or more.
7. Be extra careful not to mistake plug in connect.
8. The camera are only operated with regulative adaptor DC 12V, AC to DC non-regulative adaptor may cause camera damaged.

※The specifications and appearance of the product may change without notice. 201412

Model No. S85 企\_VER 1.0

**Model number 53S85**

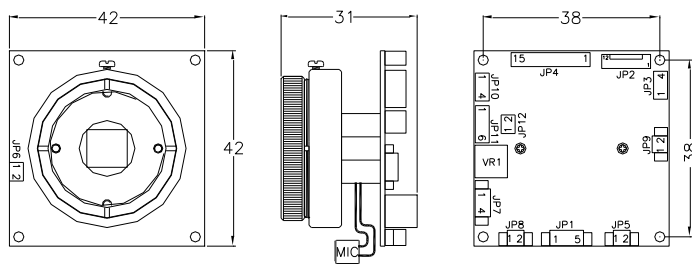
Dimension (Unit : mm /  $\pm 0.3\text{mm}$ )



Item No. MTV-53S85H-D

- CVBS(PAL/NTSC)
- Board Lens
- POWER DC 12V

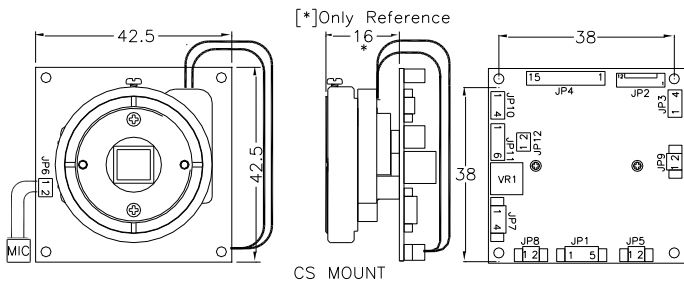
Features : S85 common functions



Item No. MTV-53S85H-CS

- CVBS(PAL/NTSC)
- C C/S Mount
- POWER DC 12V

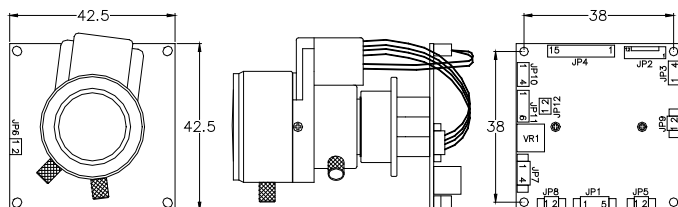
Features : S85 common functions



Item No. MTV-53S85H-CSICR

- CVBS(PAL/NTSC)
- C C/S Mount
- IR-Cut Removable
- POWER DC 12V

Features : S85 common functions



Item No. MTV-53S85H-IRVF

- CVBS(PAL/NTSC)
- Lens: Vari-focus 2.8~11 mm
- IR-Cut Removable
- POWER DC 12V

Features : S85 common functions

