

## S88 Specification

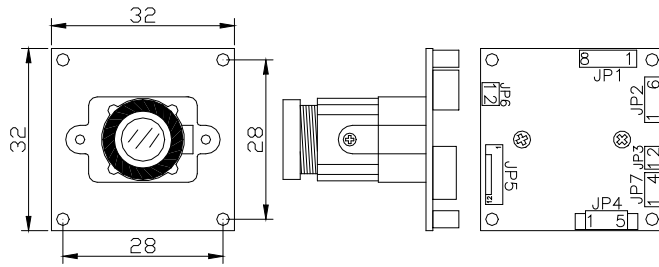
TV SYSTEM	NTSC	PAL
IMAGE SENSOR	1/3-INCH I.L CCD IMAGE SENSOR	
CCD TOTAL PIXELS	~ 410K	~ 470K
SYNC SYSTEM	INTERNAL	
MINIMUM ILLUMINATION	0.012 LUX@F1.2 /20 IRE AGC ON B/W 0.0014 LUX@F1.2 /20 IRE SENS-UP (32X) B/W	
LENS & VIEW ANGLE	3.6mm F2.0 / 92°	
RESOLUTION	540 TVL	
WHITE BALANCE	Mode	ATW / AWC
	Range	3200 ~ 10000 °K
S / N RATIO	50DB (MIN) / 60DB (TYP) (GAMMA, APERTURE, AGC, OFF)	
GAIN CONTROL	AGC ON / OFF	
GAMMA CONTROL	0.45	
SENSE UP	ON /OFF (PRESET X4 ,MAX 256X OPTION)	
H - MIRROR FUNCTION	OFF (NORMAL IMAGE) / ON (HORIZONTAL IMAGE INVERSION)	
V - MIRROR FUNCTION	OFF (NORMAL IMAGE) / ON (VERTICAL IMAGE INVERSION)	
B.L.C. FUNCTION	OFF / ON	
AUTO IRIS	A.E.S. / PWM OUT	
ELECTRONIC SHUTTER	A.E.S	1/60~1/120,000 sec.   1/50~1/120,000 sec.
	FIX	1/50(60),1/100,1/250,1/500,1/1000,1/2000,1/4000,1/10000
DNR	BUILT-IN DNR (DIGITAL NOISE REDUCTION)	
VIDEO OUTPUT	ANALOGY	1.0V P-P COMPOSITE VIDEO AT 75 ohm
	DIGITAL	ITU 601
OPERATION TEMPERATURE	-20°C TO 50°C	
OPERATIONAL HUMIDITY	WITHIN 85% RH	
POWER SUPPLY	DC12V±1V / 120MA	

1. Avoid places where there is direct sunlight. When using the camera outside.
2. Be careful, never let any water in this equipment.
3. Do not directly touch the Sensor device. If necessary, use a soft cloth moistened with alcohol to wipe off the dust.
4. When the camera installs in dust or wet environment, please puts into the camera housing.
5. Be extra careful not to shake the camera.
6. Avoid places where temperatures exceed 50 °C or more.
7. Be extra careful not to mistake plug in connect.
8. The camera are only operated with regulative adaptor DC 12V, AC to DC non-regulative adaptor may cause camera damaged.

Model No. S88 企\_VER 1.0

**Model number 53S88**

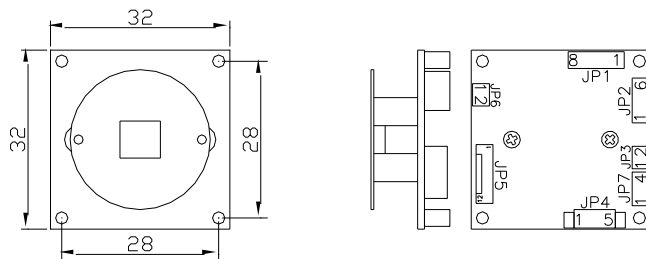
Dimension (Unit : mm /  $\pm 0.3\text{mm}$ )



Item No. MTV-53S88H-D

- CVBS(PAL/NTSC)
- Board Lens
- POWER DC 12V

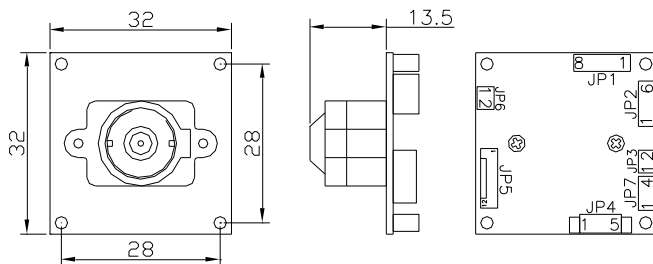
Features : S88 common functions



Item No. MTV-53S88H-DNLH

- CVBS(PAL/NTSC)
- No Lens
- POWER DC 12V

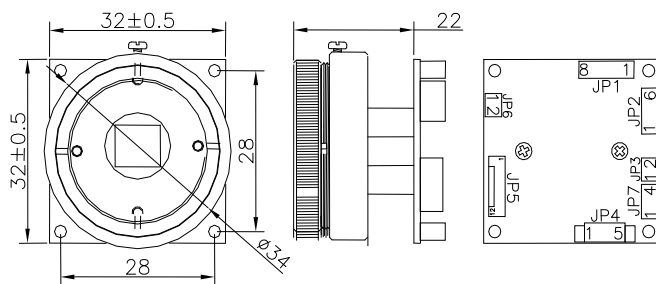
Features : S88 common functions



Item No. MTV-53S88HI-D (Cone)

- CVBS(PAL/NTSC)
- Pinhole Lens (Cone)
- POWER DC 12V

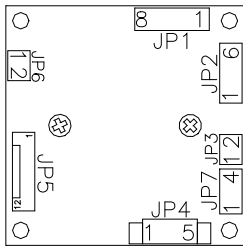
Features : S88 common functions



Item No. MTV-53S88H-DCS

- CVBS(PAL/NTSC)
- C/CS mount
- POWER DC 12V

Features : S88 common functions



JP5		JP1		JP4		JP3	
1	DCK		OPEN		GND	1	PWM OUT (DC LENS)
2	DO0	1	AES		ALC	2	GND
3	DO1	2	AGC-ON		AGC-OFF	3	VIDEO OUT
4	DO2	3	ATW		AWB	4	MINITOR OUT
5	DO3	4	BLC -OFF		BLC-ON	5	GND
6	DO4	5	NORMAL		H-MIRROR		JP6
7	DO5	6	MORMAL		V-MIRROR		JP7
8	DO6	7	SEN_UP-ON		SEN_UP-OFF	1	S0
9	DO7	8	GND			2	S1
10	HD					3	S2
11	VD					4	GND
12	GND						