

## C2 Specification

TV SYSTEM	NTSC	PAL
IMAGE SENSOR	1/4-INCH I.L. CCD IMAGE SENSOR	
CCD TOTAL PIXELS	542(H)x492(V)	542(H)x582(V)
SYNC SYSTEM	INTERNAL	
SCANNING SYSTEM	525 LINES ,60 FIELDS/SEC	625 LINES ,50 FIELDS/SEC
MINIMUM ILLUMINATION	0.5 LUX@F1.2 AGC ON	
LENS & VIEW ANGLE	3.6MM F2.0 / 68° (option:2.2,2.5,3.0,4.0,6,8,0,12.0)	
RESOLUTION	400 TVL/470 TVL (ENHANCED)	
WHITE BALANCE	AUTO HIGH SPEED WHITE BALANCE (ZERO COLOR ROLLING)	
WHITE BALANCE RANGE	3000 ~ 15000 °K	
S / N RATIO	52DB (MIN) / 60DB (TYP) ( AGC OFF)	
GAIN CONTROL	AGC	
MIRROR FUNTION	ON / OFF SWITCHABLE	
AUTO IRIS	A.E.S.	
GAMMA CORRECTION	0.45	
GAIN CONTROL	AGC	
ELECTRONIC SHUTTER	1/60~1/120,000 SEC.	1/50~1/120,000 SEC.
VIDEO OUTPUT	1.0V P-P COMPOSITE VIDEO AT 75 ohm	
OPERATION TEMPERATURE	-20°C TO 50°C	
OPERATIONAL HUMIDITY	WITHIN 85% RH	
POWER SUPPLY	DC5V±10% / 160mA ; DC12V±1V / 65mA /	

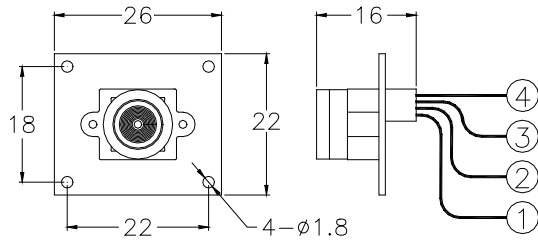
### Caution for Installation:

1. The camera are only operated with regulative adaptor DC 5V / DC 12V.
2. AC to DC non-regulative adaptor may cause camera damaged.

Model No. C2 企\_VER 1.0

**Model number 54C2**

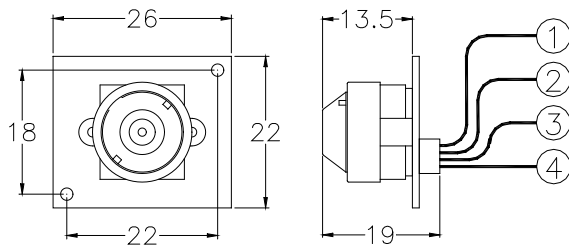
Dimension (Unit : mm / ±0.5mm)



Item No. MTV-54C2A

- CVBS(PAL/NTSC)
- Board Lens
- 22x26
- POWER DC 12V

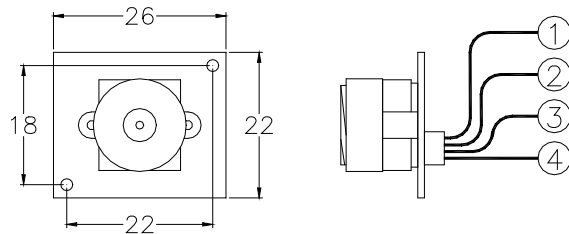
Features : C2 common functions



Item No. MTV-54C2AI-5V (Cone)

- CVBS(PAL/NTSC)
- Pinhole Lens (Cone)
- 22x26
- POWER DC 5V

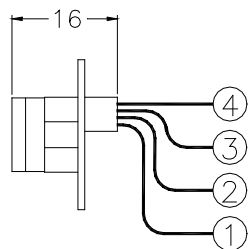
Features : C2 common functions



Item No. MTV-54C2AI-5V

- CVBS(PAL/NTSC)
- Pinhole Lens
- 22x26
- POWER DC 5V

Features : C2 common functions



P1	RED	DC-POWER INPUT
P2	BLACK	GND
P3	WHITE	VIDEO OUTPUT
<b>P4</b>	YELLOW	MIRROR SELECTOR (OPTION)