

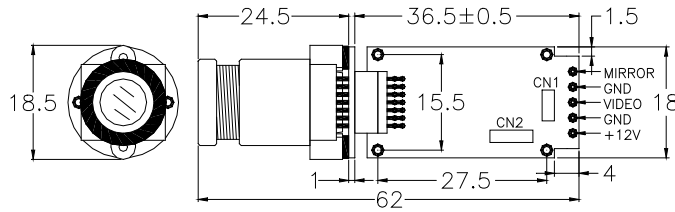
C5 Specification

TV SYSTEM	NTSC	PAL
IMAGE SENSOR	1/4-INCH I.L. CCD IMAGE SENSOR	
CCD TOTAL PIXELS	~410K	~470K
SYNC SYSTEM	INTERNAL	
SCANNING SYSTEM	525 LINES ,60 FIELDS/SEC	625 LINES ,50 FIELDS/SEC
MINIMUM ILLUMINATION	1.5 LUX@F1.2 AGC ON	
LENS & VIEW ANGLE	3.6MM F2.0 / 68° (option:2.2,2.5,3.0,4.0,6,8,0,12.0)	
RESOLUTION	470 TVL/580 TVL (ENHANCED)	
WHITE BALANCE	AUTO HIGH SPEED WHITE BALANCE (ZERO COLOR ROLLING)	
WHITE BALANCE RANGE	3000 ~ 10000 °K	
S / N RATIO	52DB (MIN) / 60DB (TYP) (AGC OFF)	
GAIN CONTROL	AGC	
MIRROR FUNTION	ON / OFF SWITCHABLE	
AUTO IRIS	A.E.S.	
GAMMA CORRECTION	0.45	
GAIN CONTROL	AGC	
ELECTRONIC SHUTTER	1/60~1/120,000 SEC.	1/50~1/120,000 SEC.
VIDEO OUTPUT	1.0V P-P COMPOSITE VIDEO AT 75 ohm	
OPERATION TEMPERATURE	-20°C TO 50°C	
OPERATIONAL HUMIDITY	WITHIN 85% RH	
POWER SUPPLY	DC12V±1V / 65mA	

Model No. C5 企_VER 1.0

Model number 54C5

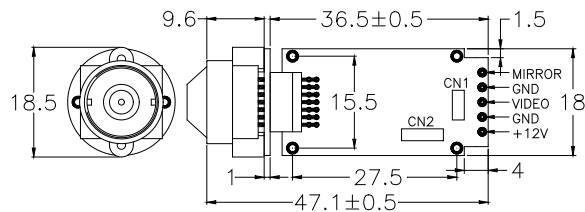
Dimension (Unit : mm / ±0.5mm)



Item No. MTV-54C5

- CVBS(PAL/NTSC)
- 1/4"CCD
- Board Lens
- POWER DC 12V

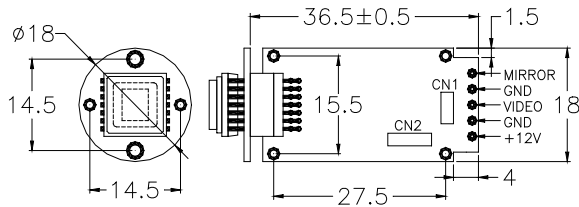
Features : C5 common functions



Item No. MTV-54C5I (Cone)

- CVBS(PAL/NTSC)
- 1/4"CCD
- Pinhole Lens [\(Cone\)](#)
- POWER DC 12V

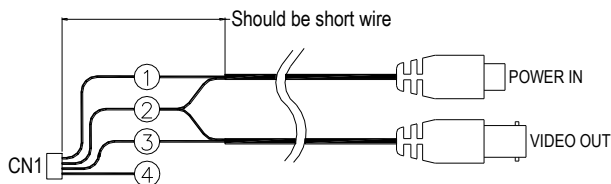
Features : C5 common functions



Item No. MTV-54C5-NLH

- CVBS(PAL/NTSC)
- 1/4"CCD
- No Lens/No Lens holder
- POWER DC 12V

Features : C5 common functions



CN1		
P1	RED	+12V DC-POWER INPUT
P2	BLACK	GND
P3	WHITE	VIDEO OUTPUT
P4	YELLOW	MIRROR SELECTOR (OPTION)